

NOV 23 2015

REQUEST FOR AGENDA PLACEMENT FORM

Submission Deadline - Tuesday, 12:00 PM before Court Dates

SUBMITTED BY: David Disheroon

TODAY'S DATE: 11/12/2015

DEPARTMENT:

X Public Works

SIGNATURE OF DEPARTMENT HEAD:

X

REQUESTED AGENDA DATE:

X November 23, 2015

SPECIFIC AGENDA WORDING: Consideration to approve the correction made to the amended final plat of Lot 1R in Bell Manor Estates, located in Precinct 2.

PERSON(S) TO PRESENT ITEM: David Disheroon

SUPPORT MATERIAL: (Must enclose supporting documentation)

TIME: Ten Minutes

ACTION ITEM:

X

WORKSHOP:

(Anticipated number of minutes needed to discuss item) **CONSENT:**

EXECUTIVE:

STAFF NOTICE:

COUNTY ATTORNEY: _____

ISS DEPARTMENT: _____

AUDITOR: _____

PURCHASING DEPARTMENT: _____

PERSONNEL: _____

PUBLIC WORKS: _____

BUDGET COORDINATOR: _____

OTHER: _____

*******This Section to be Completed by County Judge's Office*******

ASSIGNED AGENDA DATE: _____

REQUEST RECEIVED BY COUNTY JUDGE'S OFFICE _____

COURT MEMBER APPROVAL _____

Date _____

LINE TABLE

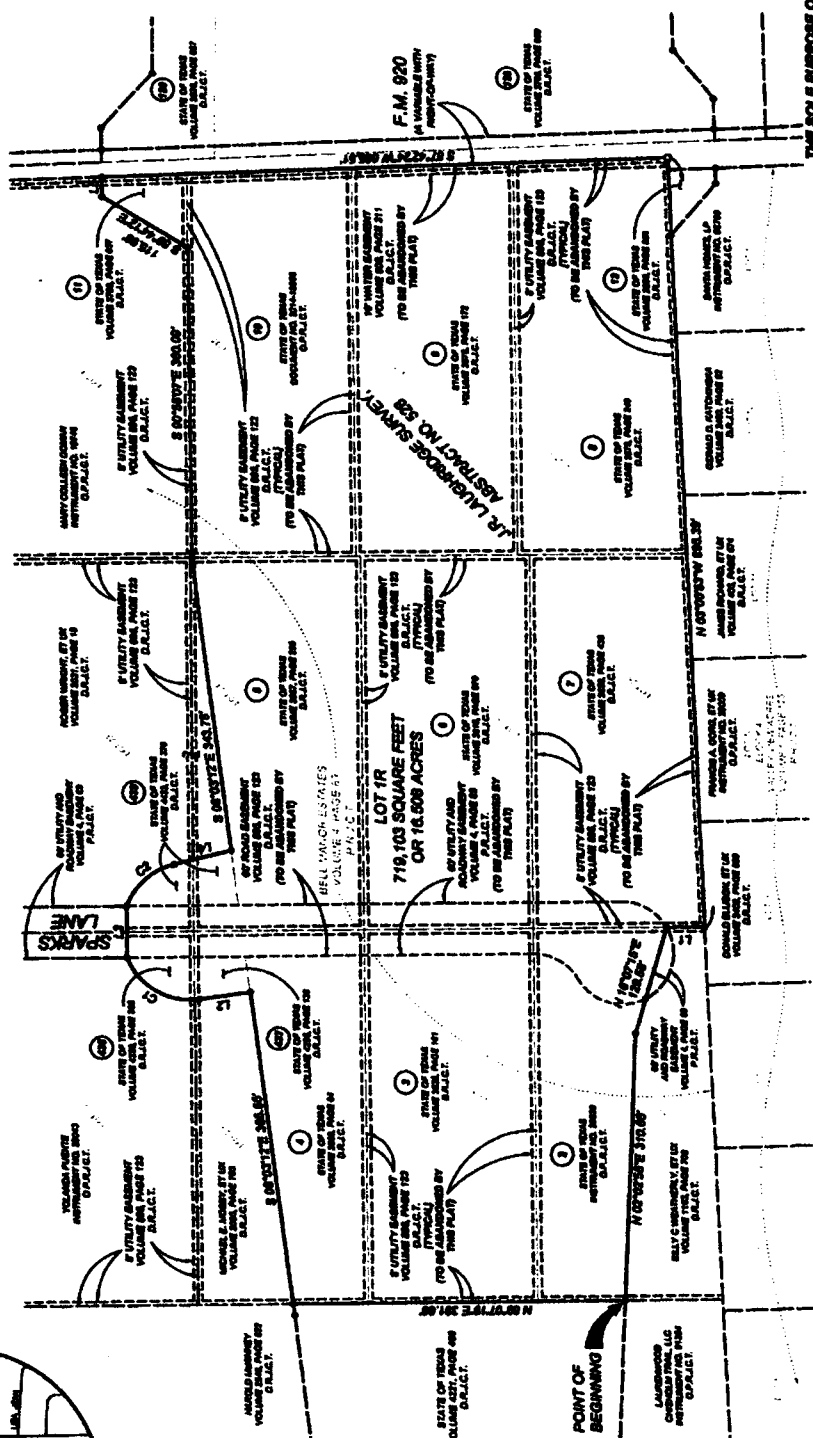
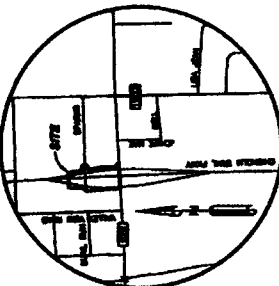
Order	Quantity	Remarks
1	1	...
2	1	...
3	1	...
4	1	...
5	1	...
6	1	...
7	1	...
8	1	...
9	1	...
10	1	...

CURVE TABLE

Curve	Radius	Length	Delta	Chord	Chord Bear.
1	21.00	12.57	170.00	12.57	...
2	21.00	12.57	170.00	12.57	...
3	21.00	12.57	170.00	12.57	...
4	21.00	12.57	170.00	12.57	...
5	21.00	12.57	170.00	12.57	...
6	21.00	12.57	170.00	12.57	...
7	21.00	12.57	170.00	12.57	...
8	21.00	12.57	170.00	12.57	...
9	21.00	12.57	170.00	12.57	...
10	21.00	12.57	170.00	12.57	...



VICINITY MAP
NOT TO SCALE



THE SOLE PURPOSE OF THIS REPLAT IS TO ABANDON EXISTING EASEMENTS AS SHOWN HEREON AND INCLUDE OWNER'S SIGNATURE.

LOT 1R
BELL MANOR ESTATES

BEING A REPLAT OF LOTS 1 THRU 4 AND LOTS 24 THRU 28 AN ADDITION TO JOHNSON COUNTY, TEXAS, BEING 16,608 ACRES SITUATED IN THE J.R. LANCASTER SURVEY, ABSTRACT NO. 888, JOHNSON COUNTY, TEXAS

MARSHALL LANCASTER & ASSOCIATES, INC.
CONSULTING LAND SURVEYORS
COMMERCIAL, RURAL AND INDUSTRIAL SURVEYING AND ESTIMATION
2525 JESSE BETHEA - SPRINGFIELD - TEXAS 77134
1604 North Herwood Drive, Suite 2, Meind, TX 76884
phone (817) 368-8600 fax (817) 362-3221 www.mls-survey.com
firm no. 90049198

SHEET 1 OF 2
DATE: 10/28/2015
DRAWN BY: BWC
CHECKED BY: MLL
FILE: 10161.LORD
JOB NO.: 10191

LEGEND
● FOUND 3 INCH BRASS DISK STAMPED TEXAS DEPARTMENT OF TRANSPORTATION A.C.M. BY CONCRETE
+ FOUND 3 INCH BRASS DISK WITH ALLUMINUM CAP STAMPED T.M.A. P.L.S. 4527 (ALSO NOTED OTHERWISE)
○ TEXAS DEPARTMENT OF TRANSPORTATION PAPER NUMBER

OWNER
STATE OF TEXAS
101 EAST TENT STREET
PHOENIX 11-101-2000

GENERAL NOTES

- 1. THE PROPERTY IS LOCATED WITHIN THE FLOOD HAZARD ZONE...
2. THE PLAT WAS PREPARED WITHOUT THE BENEFIT OF TITLE REPORT...
3. THE PLAT IS SUBJECT TO ALL EASEMENTS...
4. ALL OF THE LAND SHOWN HEREON IS OWNED BY...
5. THE BOUNDARY LINES SHOWN ARE BASED ON...
6. NO EASEMENTS ARE SHOWN ON THIS PLAT...
7. PROPERTY OWNER'S RESPONSIBILITY...
8. THE PROPERTY IS SUBJECT TO ALL EASEMENTS...
9. THE PROPERTY IS SUBJECT TO ALL EASEMENTS...
10. THE PROPERTY IS SUBJECT TO ALL EASEMENTS...

ADDITION TO THE ORIGINAL SURVEYOR'S CERTIFICATE...
APPROVED BY JOHNSON COUNTY COMMISSIONERS COURT ON THE... DAY OF... 2015

APPROVED BY JOHNSON COUNTY COMMISSIONERS COURT ON THE... DAY OF... 2015

APPROVED BY JOHNSON COUNTY COMMISSIONERS COURT ON THE... DAY OF... 2015

APPROVED BY JOHNSON COUNTY COMMISSIONERS COURT ON THE... DAY OF... 2015

APPROVED BY JOHNSON COUNTY COMMISSIONERS COURT ON THE... DAY OF... 2015

APPROVED BY JOHNSON COUNTY COMMISSIONERS COURT ON THE... DAY OF... 2015

APPROVED BY JOHNSON COUNTY COMMISSIONERS COURT ON THE... DAY OF... 2015

APPROVED BY JOHNSON COUNTY COMMISSIONERS COURT ON THE... DAY OF... 2015

APPROVED BY JOHNSON COUNTY COMMISSIONERS COURT ON THE... DAY OF... 2015

APPROVED BY JOHNSON COUNTY COMMISSIONERS COURT ON THE... DAY OF... 2015

APPROVED BY JOHNSON COUNTY COMMISSIONERS COURT ON THE... DAY OF... 2015

APPROVED BY JOHNSON COUNTY COMMISSIONERS COURT ON THE... DAY OF... 2015

APPROVED BY JOHNSON COUNTY COMMISSIONERS COURT ON THE... DAY OF... 2015

APPROVED BY JOHNSON COUNTY COMMISSIONERS COURT ON THE... DAY OF... 2015

APPROVED BY JOHNSON COUNTY COMMISSIONERS COURT ON THE... DAY OF... 2015

APPROVED BY JOHNSON COUNTY COMMISSIONERS COURT ON THE... DAY OF... 2015

APPROVED BY JOHNSON COUNTY COMMISSIONERS COURT ON THE... DAY OF... 2015

APPROVED BY JOHNSON COUNTY COMMISSIONERS COURT ON THE... DAY OF... 2015

APPROVED BY JOHNSON COUNTY COMMISSIONERS COURT ON THE... DAY OF... 2015

APPROVED BY JOHNSON COUNTY COMMISSIONERS COURT ON THE... DAY OF... 2015

APPROVED BY JOHNSON COUNTY COMMISSIONERS COURT ON THE... DAY OF... 2015

APPROVED BY JOHNSON COUNTY COMMISSIONERS COURT ON THE... DAY OF... 2015

APPROVED BY JOHNSON COUNTY COMMISSIONERS COURT ON THE... DAY OF... 2015

APPROVED BY JOHNSON COUNTY COMMISSIONERS COURT ON THE... DAY OF... 2015

APPROVED BY JOHNSON COUNTY COMMISSIONERS COURT ON THE... DAY OF... 2015

APPROVED BY JOHNSON COUNTY COMMISSIONERS COURT ON THE... DAY OF... 2015

APPROVED BY JOHNSON COUNTY COMMISSIONERS COURT ON THE... DAY OF... 2015

APPROVED BY JOHNSON COUNTY COMMISSIONERS COURT ON THE... DAY OF... 2015

APPROVED BY JOHNSON COUNTY COMMISSIONERS COURT ON THE... DAY OF... 2015

APPROVED BY JOHNSON COUNTY COMMISSIONERS COURT ON THE... DAY OF... 2015

APPROVED BY JOHNSON COUNTY COMMISSIONERS COURT ON THE... DAY OF... 2015

DEDICATION

KNOW YE ALL MEN OF THESE PRESENTS...

THAT THE STATE OF TEXAS, COUNTY OF JOHNSON, TEXAS, DO HEREBY CERTIFY THAT THE PLAT DESCRIBED AND REFERENCED ABOVE...

APPROVED BY JOHNSON COUNTY COMMISSIONERS COURT ON THE... DAY OF... 2015

APPROVED BY JOHNSON COUNTY COMMISSIONERS COURT ON THE... DAY OF... 2015

APPROVED BY JOHNSON COUNTY COMMISSIONERS COURT ON THE... DAY OF... 2015

APPROVED BY JOHNSON COUNTY COMMISSIONERS COURT ON THE... DAY OF... 2015



APPROVED BY JOHNSON COUNTY COMMISSIONERS COURT ON THE... DAY OF... 2015

LEGAL DESCRIPTION

ALL THAT PART OF PARCELS OF LAND BEING STRIPPED AS THE LAURENS COUNTY, TEXAS, COUNTY OF JOHNSON, TEXAS, DO HEREBY CERTIFY THAT THE PLAT DESCRIBED AND REFERENCED ABOVE...

PLAT RECORDED IN...

VOLUME... PAGE... BLOCK...

SUBJECT...

COUNTY CLERK, JOHNSON COUNTY, TEXAS

SP0077

SHEET 2 OF 2
DATE: 10/06/2015
DRAWN BY: BRWC
CHECKED BY: MLL
FILE: 10161.CRD
JOB NO.: 10161

MARSHALL LANCASTER & ASSOCIATES, INC.
CONSULTING LAND SURVEYORS
1844 North Newwood Drive, Suite E, Hurst, TX 76054
phone (817) 268-8900 fax (817) 262-2331 www.mls-survey.com

BELL MANOR ESTATES
BEING A REPLAT OF
LOTS 1 THRU 4 AND LOTS 24 THRU 28
AN ADDITION TO JOHNSON COUNTY, TEXAS,
BEING 16.988 ACRES SITUATED
IN THE J.R. LAURHODGE SURVEY,
ABSTRACT NO. 638, JOHNSON COUNTY, TEXAS



APPROVED BY JOHNSON COUNTY COMMISSIONERS COURT ON THE... DAY OF... 2015

THE SOLE PURPOSE OF THIS REPLAT IS TO
ABANDON EXISTING EASEMENTS AS SHOWN HEREON AND
INCLUDE OWNER'S SIGNATURE.
AMENDED FINAL PLAT OF

LOT 1R

BELL MANOR ESTATES

BEING A REPLAT OF
LOTS 1 THRU 4 AND LOTS 24 THRU 28
AN ADDITION TO JOHNSON COUNTY, TEXAS,
BEING 16.988 ACRES SITUATED
IN THE J.R. LAURHODGE SURVEY,
ABSTRACT NO. 638, JOHNSON COUNTY, TEXAS

SURVEYOR'S CERTIFICATE

I, MARSHALL LANCASTER, A REGISTERED PROFESSIONAL LAND SURVEYOR IN THE STATE OF TEXAS, DO HEREBY CERTIFY THAT THE PLAT DESCRIBED AND REFERENCED ABOVE...

APPROVED BY JOHNSON COUNTY COMMISSIONERS COURT ON THE... DAY OF... 2015

APPROVED BY JOHNSON COUNTY COMMISSIONERS COURT ON THE... DAY OF... 2015

COUNTY CLERK

OWNER

STATE OF TEXAS
COUNTY OF JOHNSON
1844 NORTH NEWWOOD DRIVE, SUITE E
HURST, TEXAS 76054
PHONE 817-268-8900